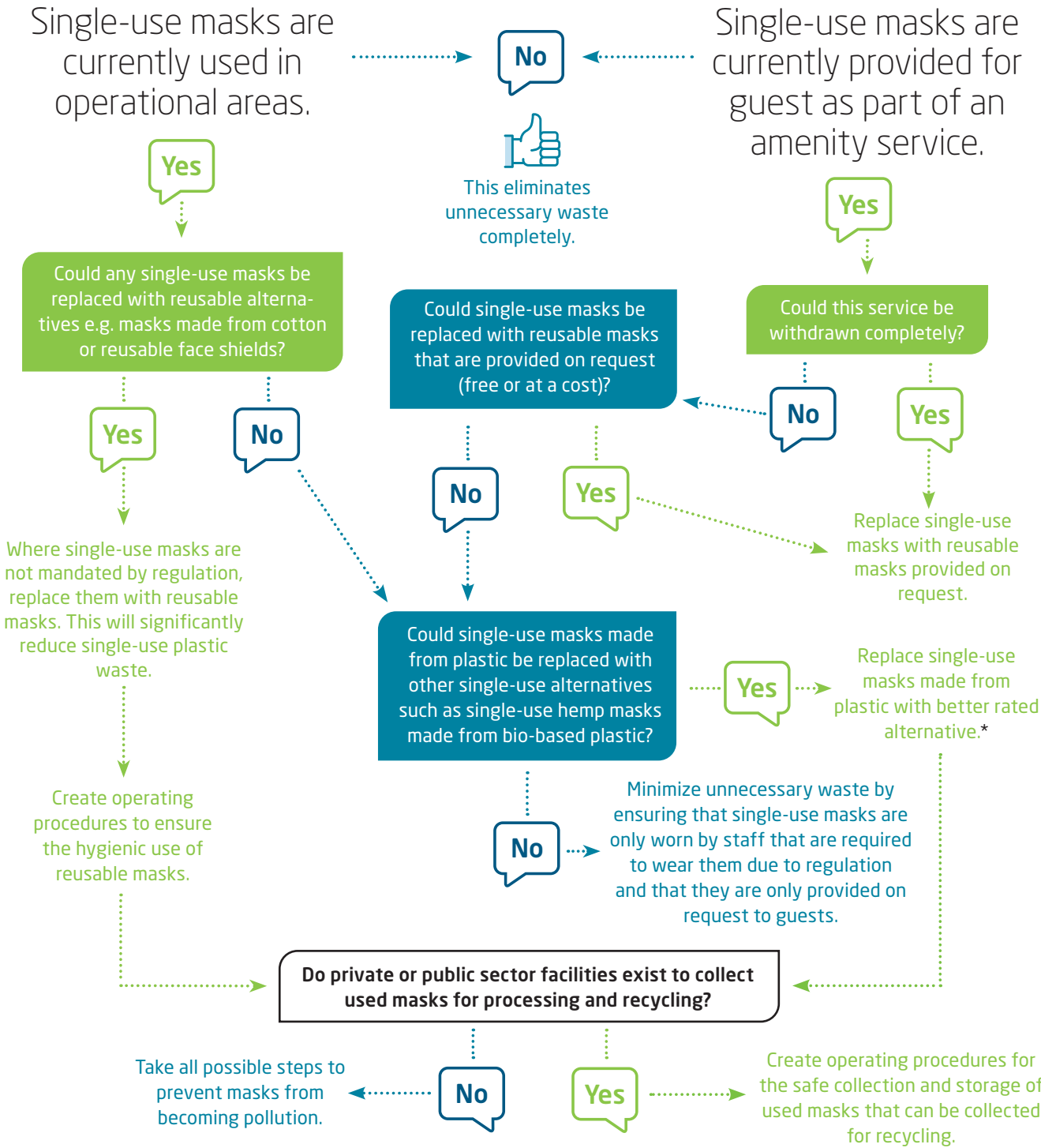




Decision tree for single-use masks

* See our Sustainability Ratings Chart and Standard Operating Procedure Booklet to make a more informed decision.



PLEASE NOTE:

- Some treatment plants can apply an autoclave sterilization process and then fabrics can be recycled. If this is not possible, they should be disposed of in the general waste container to avoid possible contagions.

- When choosing alternatives, it is important to ensure that they meet required safety standards.